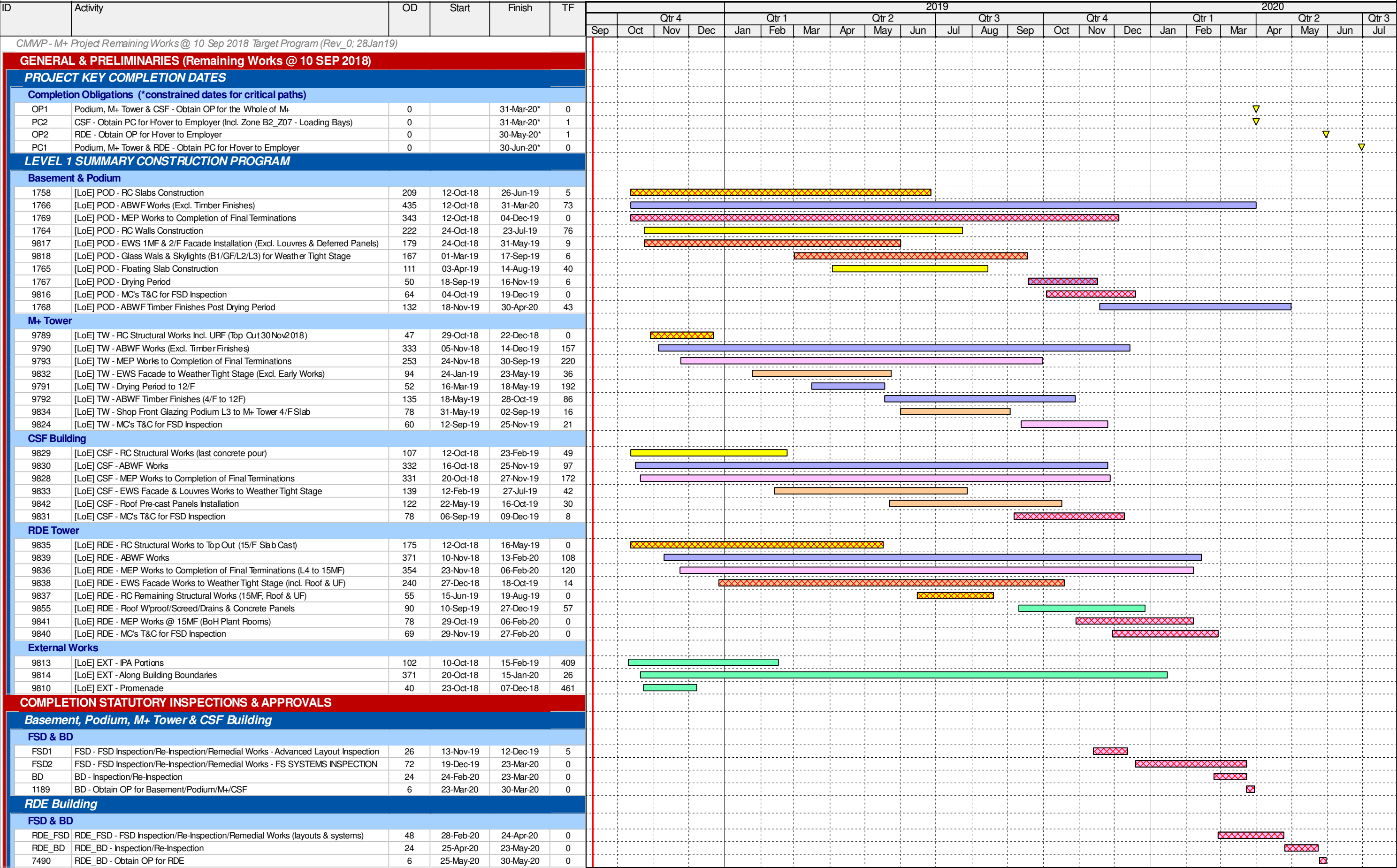



M+ Museum



Lyric Theatre Complex

| Activity ID | Activity Name | Start Date | Finish Date | 2019 | | | | | | | | | | | |
|--|---|-------------|-------------|---|-----------|-----------|-----------|---|--|--|--|-------------------------------|--|--|--|
| | | | | Jan 13 | Feb 14 | Mar 15 | Apr 16 | | | | | | | | |
| L1 Contract for Lyric Theatre Complex (3MRP) - Enviromental | | | | | | | | | | | | | | | |
| Cost Centre B - Excavation and Lateral Support (ELS) Stage 2 | | | | | | | | | | | | | | | |
| Excavation and ELS Works (Stage 2) | | | | | | | | | | | | | | | |
| Area 1 | | | | | | | | | | | | | | | |
| CB161470 | Area 1: Excavate to -6.1mPD | 08-Dec-18 A | 12-Feb-19 | | | | | | | | | | | | |
| CB161480 | Area 1: Install Waling & Strut Layer S4 | 13-Feb-19 | 27-Feb-19 | | | | | | | | | | | | |
| CB161490 | Area 1: Excavate to -9.0, -11.3, -14.2 w/ soil Berm | 28-Feb-19 | 14-Mar-19 | | | | | | | | | | | | |
| Area 2 | | | | | | | | | | | | | | | |
| CB162470 | Area 2: Area 2: Excavate to -6.1mPD | 21-Dec-18 A | 16-Feb-19 | | | | | | | | | | | | |
| CB162480 | Area 2: Install Waling & Strut Layer S4 | 18-Feb-19 | 02-Mar-19 | | | | | | | | | | | | |
| CB162490 | Area 2: Excavate to -9.0, -11.3, -14.2 w/ soil Berm | 04-Mar-19 | 16-Mar-19* | | | | | | | | | | | | |
| Area 3 | | | | | | | | | | | | | | | |
| CB163470 | Area 3: Excavate to -6.1mPD | 22-Dec-18 A | 19-Jan-19 A | | | | | | | | | | | | |
| CB163480 | Area 3: Area 3: Install Waling & Strut Layer S4 | 16-Jan-19 A | 25-Feb-19 | | | | | | | | | | | | |
| CB163490 | Area 3 Excavate to Formation Level -9.6mPD | 26-Feb-19 | 21-Mar-19 | | | | | | | | | | | | |
| Area 4 | | | | | | | | | | | | | | | |
| CB164460 | Area 4: Install Waling & Strut Layer S3 | 19-Dec-18 A | 08-Jan-19 A | | | | | | | | | | | | |
| CB164470 | Area 4: Excavate to -6.1mPD | 17-Jan-19 A | 16-Feb-19 | | | | | | | | | | | | |
| CB164480 | Area 4: Install Waling & Strut Layer S4 | 26-Feb-19 | 18-Mar-19 | | | | | | | | | | | | |
| CB164490 | Area 4: Excavate to Formation Level -9.6mPD | 22-Mar-19 | 16-Apr-19* | | | | | | | | | | | | |
| Cost Centre C - Basement | | | | | | | | | | | | | | | |
| Cost Centre C1 - Essential Basement Structure (Excl. AET Protection & Box Culvert) | | | | | | | | | | | | | | | |
| CC102401b | [Area 6 - L06] Construct Pile Cap / B1 Slab - 1b | 10-Oct-18 A | 09-Feb-19 | | | | | | | | | | | | |
| CC102403 | [Area 6 - L06] Construct Pile Cap / B1 Slab - 3 | 02-Nov-18 A | 13-Feb-19 | | | | | | | | | | | | |
| CC102410 | [Area 6 - L06] Remove Strut Layer S2 | 03-Dec-18 A | 19-Jan-19 A | | | | | | | | | | | | |
| CC102420 | [Area 6 - L06] Construct B1-B1M Columns & Structural Walls | 10-Dec-18 A | 14-Mar-19 | | | | | | | | | | | | |
| CC102430 | [Area 6 - L06] Construct B1M Beam & Slab | 14-Jan-19 A | 04-Apr-19 | | | | | | | | | | | | |
| CC100100 | [South - L01] Blinding Layer for Pile Cap / B2 Slab at Central Portion | 07-Mar-19 | 11-Apr-19 | | | | | | | | | | | | |
| CC100200 | [South - L01] Construct Central Pile Cap / B2 Slab at -11.3mPD & -14.2mPD | 12-Mar-19 | 17-May-19 | | | | | | | | | | | | |
| CAI No. 012 Advance Works for Artist Square Bridge | | | | | | | | | | | | | | | |
| P34 Stair & Lift Tower | | | | | | | | | | | | | | | |
| CAI12240 | Construct Protection Slab | 26-Nov-18 A | 17-Jan-19 A | | | | | | | | | | | | |
| CAI12244 | Construct Bored Pile BP-2 | 18-Jan-19 A | 25-Feb-19 | | | | | | | | | | | | |
| <div><div></div> Remaining Work</div> <div><div></div> Critical Remaining Work</div> <div><div></div> Actual Work</div> <div><div></div> Milestone</div> | | | | <div>Project ID: L13MRP-20190131-Env</div> <div>Layout: L1-3MRP (Env)</div> | | | | <div>West Kowloon Cultural District Authority</div> <div>L1 Contract for Lyric Theatre Complex & Extended Basement</div> <div>Three Month Rolling Programme (3MRP) - Status as of 31 Jan 2019</div> | | | | <div><div></div> Gammon</div> | | | |

| Activity ID | Activity Name | Start Date | Finish Date | 2019 | | | |
|--|---|-------------|-------------|---|-----------|-----------|-----------|
| | | | | Jan 13 | Feb 14 | Mar 15 | Apr 16 |
| CAI12248 | Construct Bored Pile BP-3 | 26-Feb-19 | 01-Apr-19 | | | | |
| CAI12254 | Construct Bored Pile BP-1 | 02-Apr-19 | 11-May-19 | | | | |
| Cost Centre D - Public Infrastructure Works (PIW) | | | | | | | |
| Cost Centre D2 - Austin Road West Lay-by | | | | | | | |
| Cost Centre D2.1 Roadworks and Remaining | | | | | | | |
| MC30-Ch.100 to MC30-Ch.50 | | | | | | | |
| CD210520 | MC30-Ch100-50: DN450 Freshwater (0+114 - 0+64) | 11-Jan-19 A | 22-Jan-19 A | | | | |
| CD210525 | MC30-Ch100-50: DN450 Salt Water (0+112 - 0+62) | 11-Jan-19 A | 22-Jan-19 A | | | | |
| MC30-Ch.50 to MC30-Ch.00 | | | | | | | |
| CD210410 | MC30-Ch50-00: Road Drainage (WL3.1 to SF_1.2A) | 26-Jan-19 A | 23-Feb-19 | | | | |
| CD210420 | MC30-Ch50-00: DN450 Freshwater (0+64 - 0+14) | 25-Feb-19 | 30-Mar-19 | | | | |
| CD210425 | MC30-Ch50-00: DN450 Salt Water (0+062 - 0+12) | 25-Feb-19 | 30-Mar-19 | | | | |
| Cost Centre D2.2 Drainage | | | | | | | |
| MC30-Ch.170 to MC30-Ch.00 | | | | | | | |
| MC30-Ch.40 to MC30-Ch.30 (MH SF_1.2B to SF_1.2A) | | | | | | | |
| CD220166 | MC30-Ch170-00: 1350mm dia Drainage (SF1.2B to SF1.2A) - Install Drainage | 11-Dec-18 A | 24-Jan-19 A | | | | |
| CD220168 | MC30-Ch170-00: 1350mm dia Drainage (SF1.2B to SF1.2A) - Construct Manhole | 11-Jan-19 A | 29-Jan-19 A | | | | |
| MC30-Ch.30 to MC30-Ch.00 (MH SF_1.2A to SF_1.2A_2) | | | | | | | |
| CD220174 | MC30-Ch170-00: 1350mm dia Drainage (SF1.2A to SF1.2A_2) - Excavation & ELS | 14-Dec-18 A | 05-Jan-19 A | | | | |
| CD220176 | MC30-Ch170-00: 1350mm dia Drainage (SF1.2A to SF1.2A_2) - Install Drainage | 07-Jan-19 A | 26-Jan-19 A | | | | |
| CD220178 | MC30-Ch170-00: 1350mm dia Drainage (SF1.2A to SF1.2A_2) - Construct Manhole | 15-Jan-19 A | 09-Feb-19* | | | | |
| MC20-Ch.140 to MC20-Ch.00 | | | | | | | |
| MC20-Ch.140 to MC20-Ch.120 (MH SF_1.2A_2 to SF_1.1) | | | | | | | |
| CD2201820 | MC20-Ch140-00: 1800mm dia Drainage (SF1.2A_2 to SF1.1) - Sheet Pile | 04-Jan-19 A | 13-Feb-19 | | | | |
| CD2201840 | MC20-Ch140-00: 1800mm dia Drainage (SF1.2A_2 to SF1.1) - Excavation & Els | 25-Jan-19 A | 20-Feb-19 | | | | |
| CD2201860 | MC20-Ch140-00: 1800mm dia Drainage (SF1.2A_2 to SF1.1) - Install Drainage | 15-Feb-19 | 23-Feb-19 | | | | |
| CD2201880 | MC20-Ch140-00: 1800mm dia Drainage (SF1.2A_2 to SF1.1) - Construct Manhole | 21-Feb-19 | 06-Mar-19 | | | | |
| MC20-Ch.120 to MC20-Ch.80 (MH SF_1.1 to SF_1.1A) | | | | | | | |
| zD2201820 | MC20-Ch140-00: 1800mm dia Drainage (SF1.1 to SF1.1A) - Sheet Pile | 25-Feb-19 | 16-Mar-19 | | | | |
| zD2201840 | MC20-Ch140-00: 1800mm dia Drainage (SF1.1 to SF1.1A) - Excavation & Els | 11-Mar-19 | 30-Mar-19 | | | | |
| zD2201860 | MC20-Ch140-00: 1800mm dia Drainage (SF1.1 to SF1.1A) - Install Drainage | 26-Mar-19 | 09-Apr-19 | | | | |
| zD2201880 | MC20-Ch140-00: 1800mm dia Drainage (SF1.1 to SF1.1A) - Construct Manhole | 06-Apr-19 | 23-Apr-19 | | | | |
| <div> <div></div> Remaining Work <div></div> Critical Remaining Work <div></div> Actual Work <div></div> Milestone </div> | | | | Project ID: L13MRP-20190131-Env Layout: L1-3MRP (Env) | | | |
| West Kowloon Cultural District Authority L1 Contract for Lyric Theatre Complex & Extended Basement Three Month Rolling Programme (3MRP) - Status as of 31 Jan 2019 | | | |  | | | |